

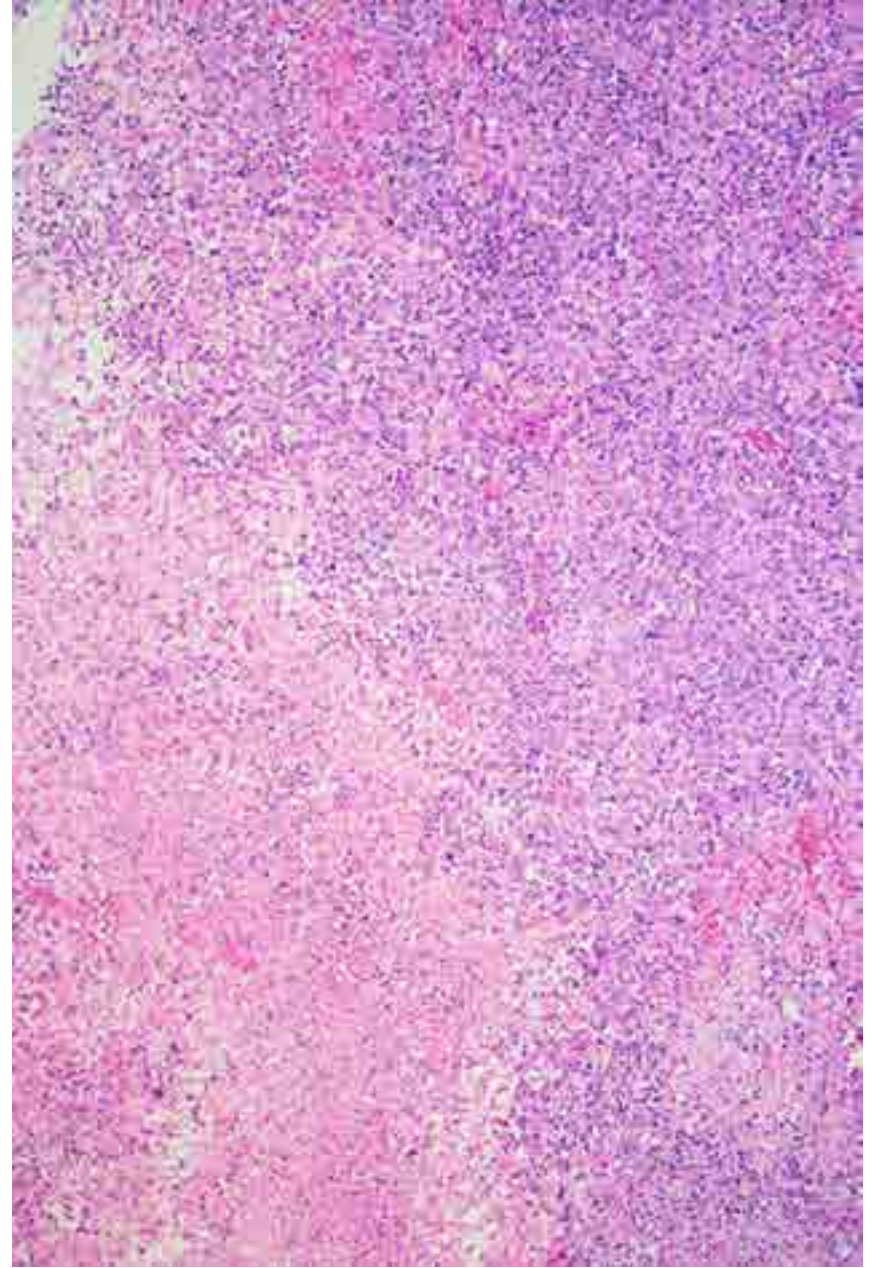
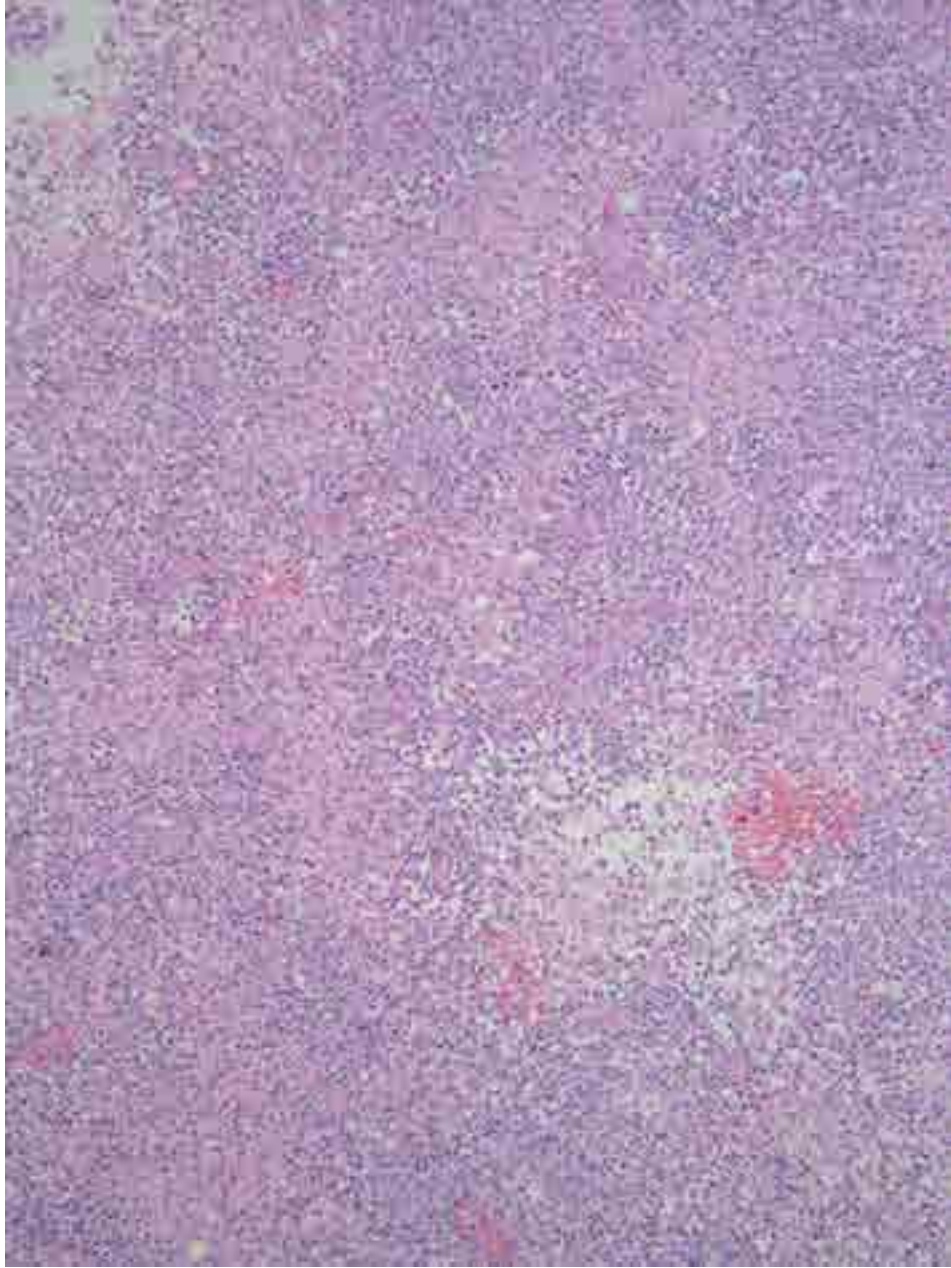


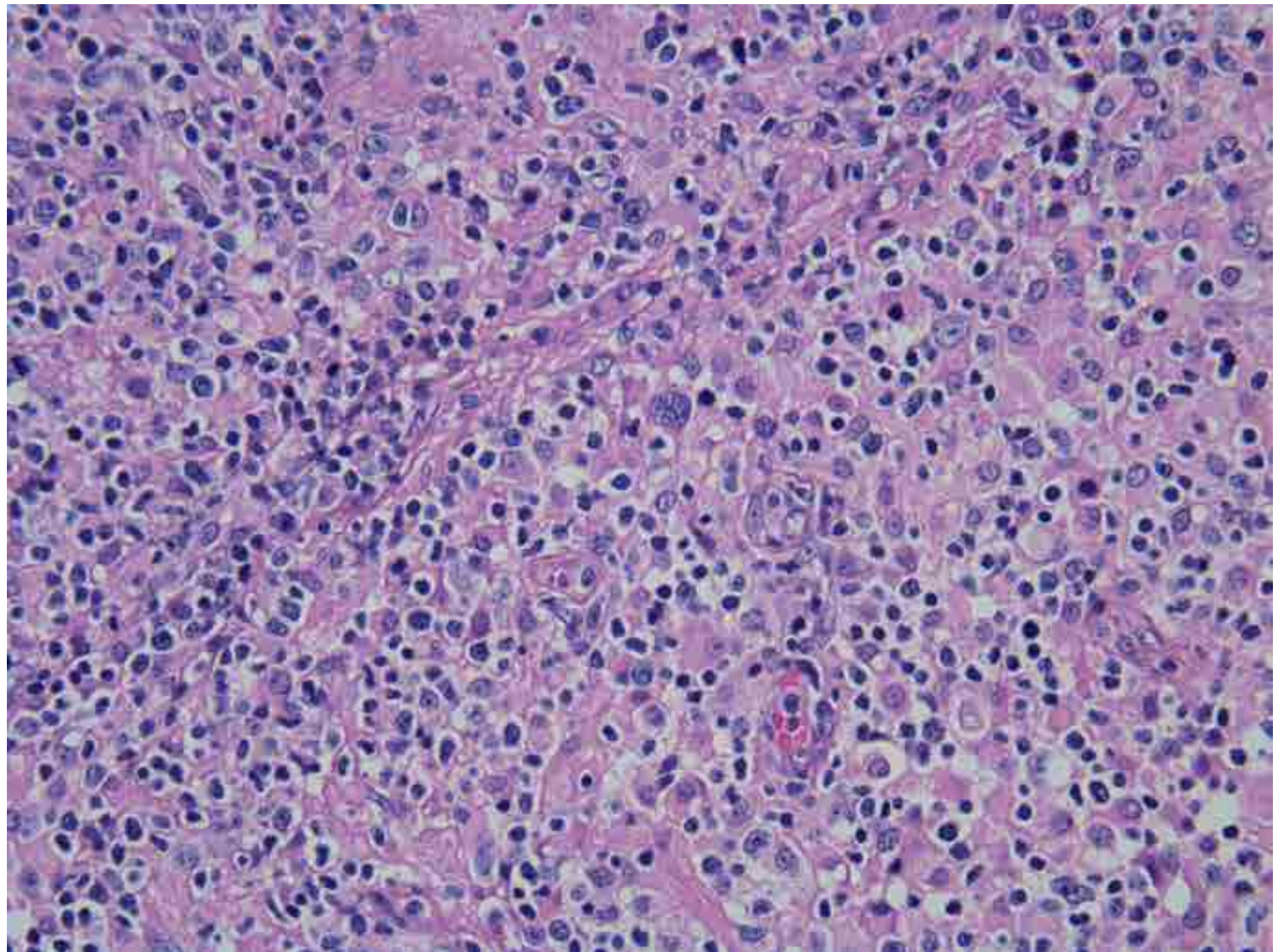
PRESENTACIÓN DE MINI-CASOS DE HEMATOPATOLOGÍA B-8102-15

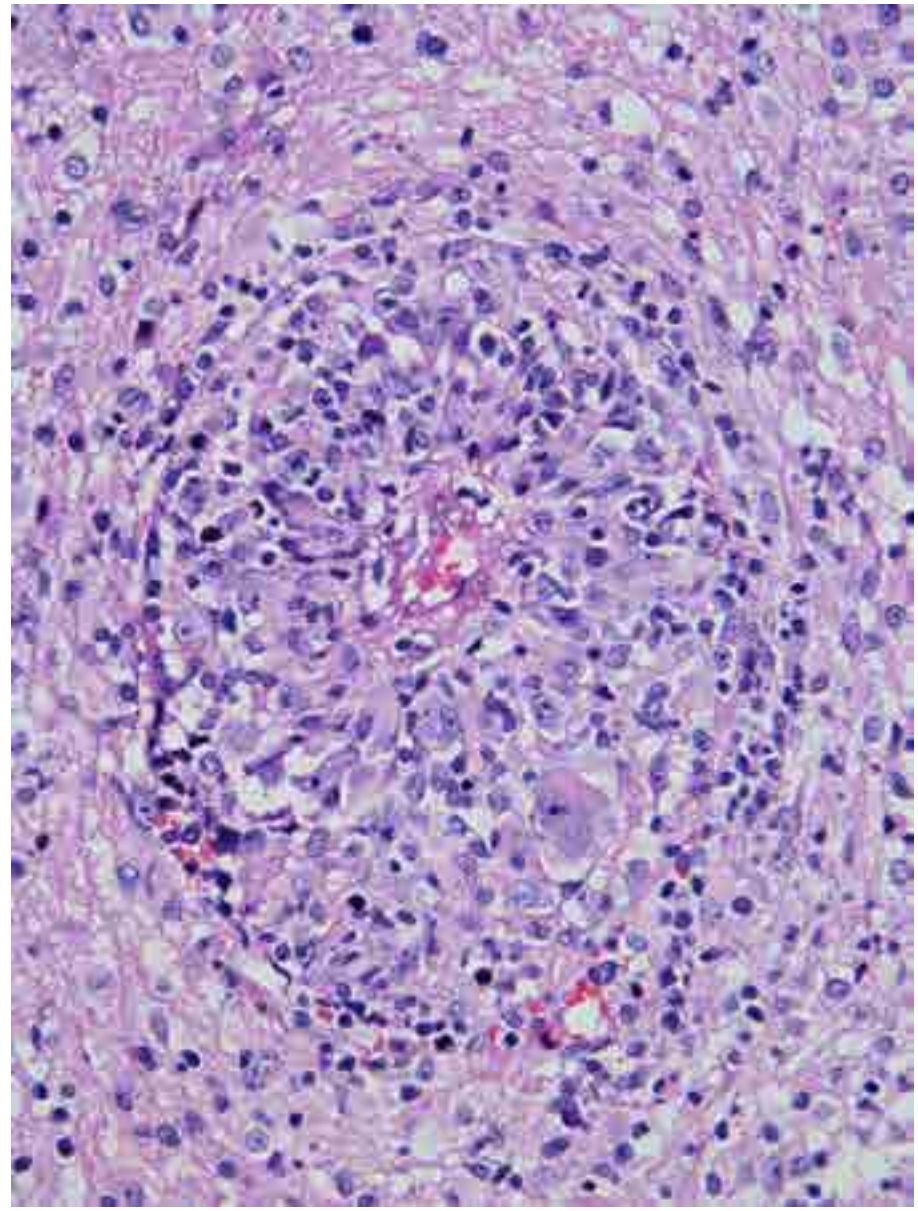
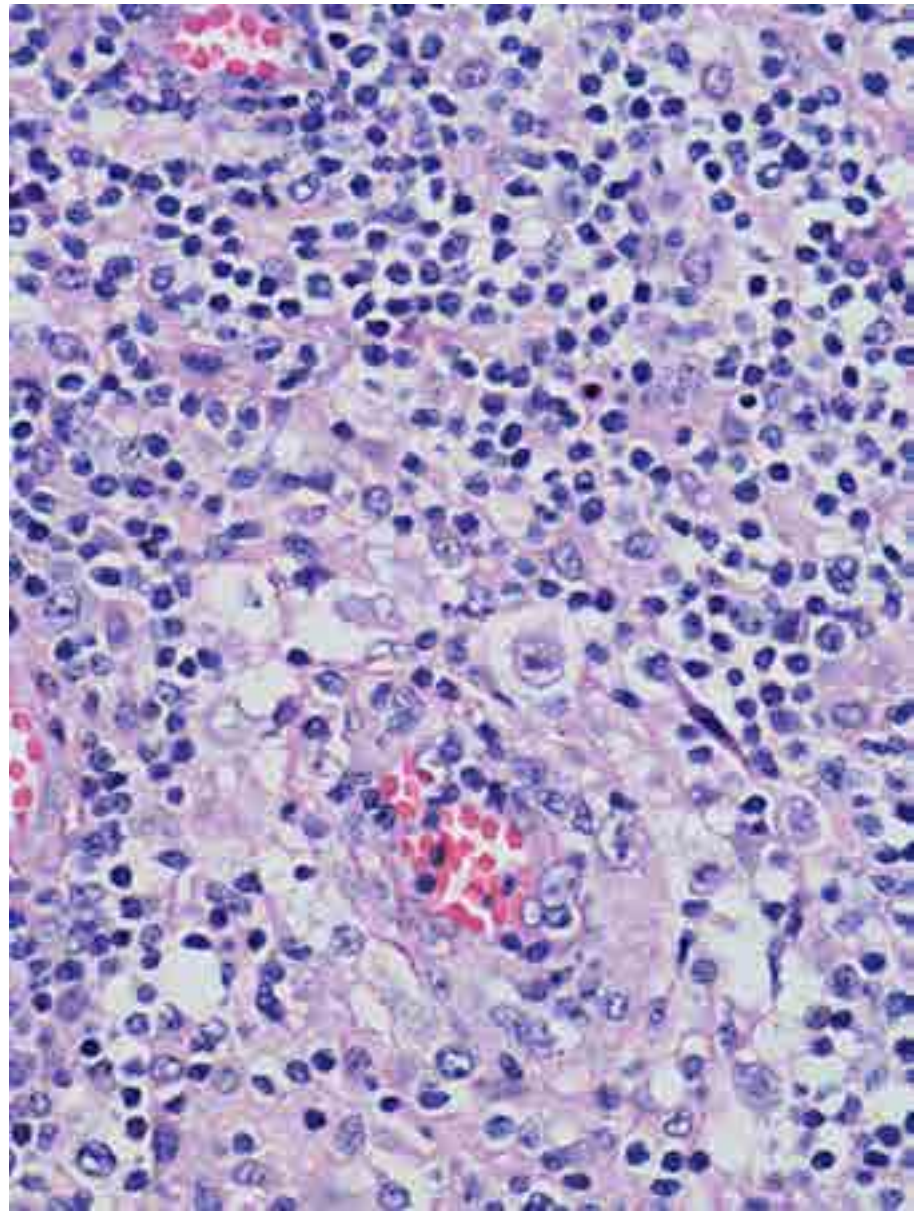
Información clínica

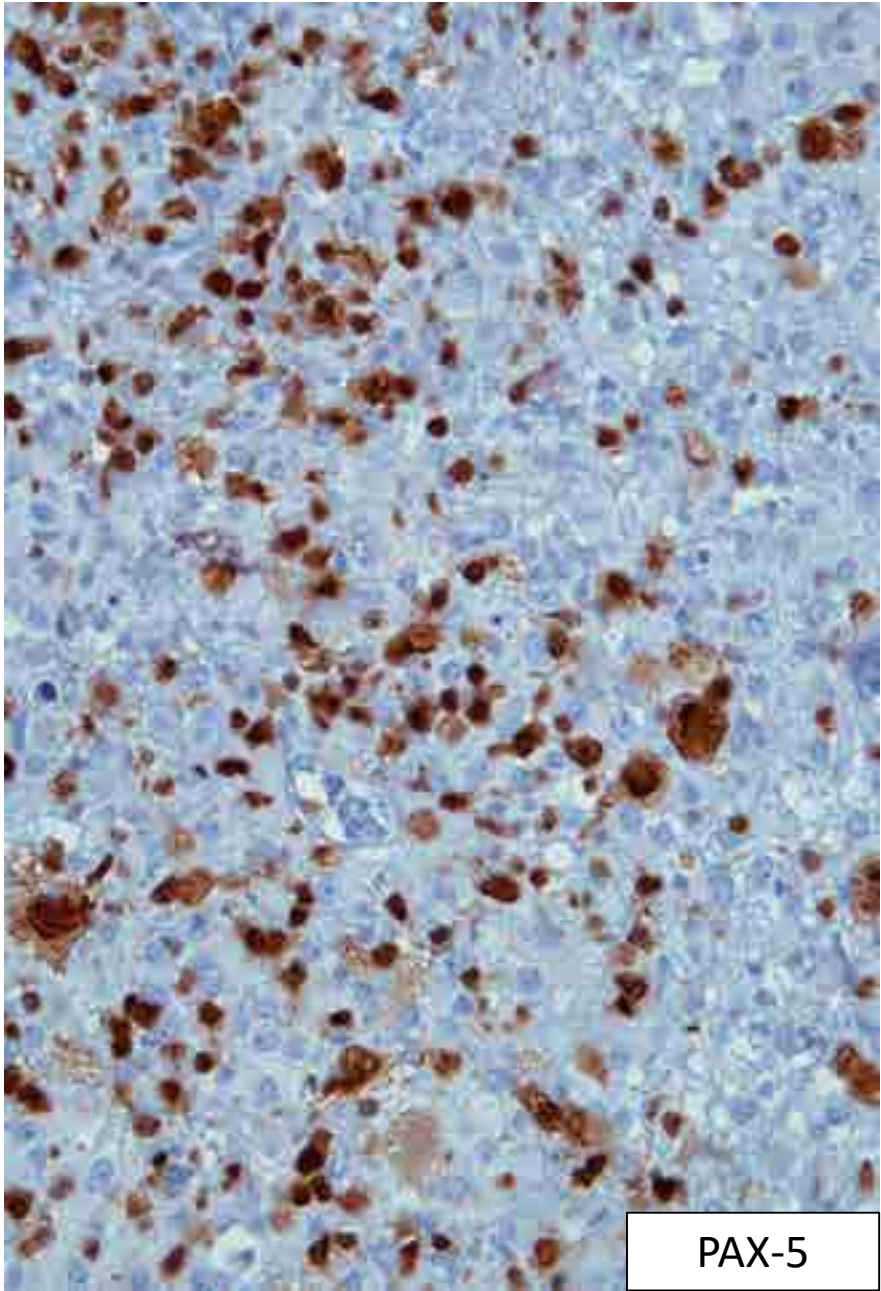
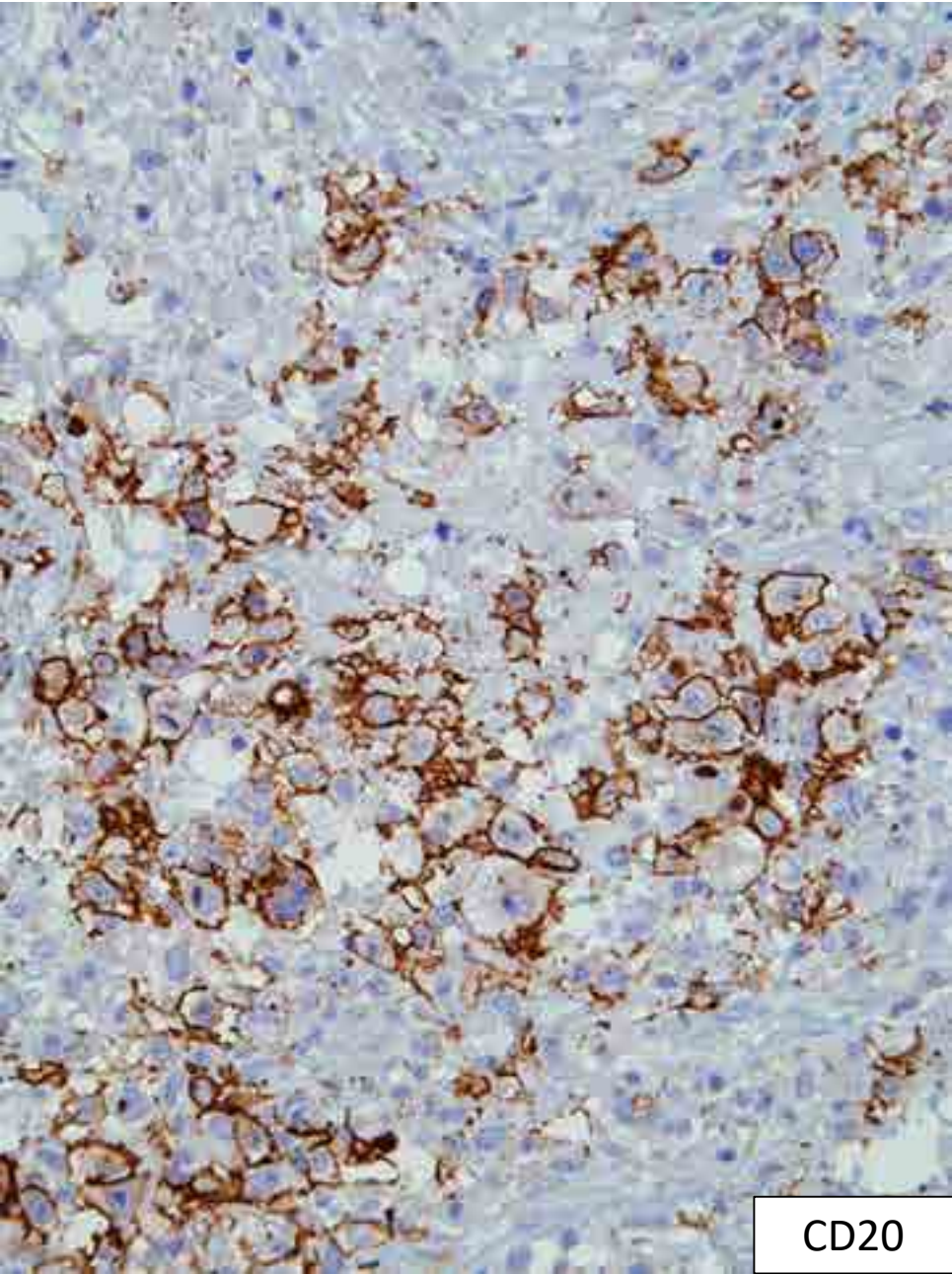
- Femenino
- Edad: 51 años
- Lesión en cerebelo

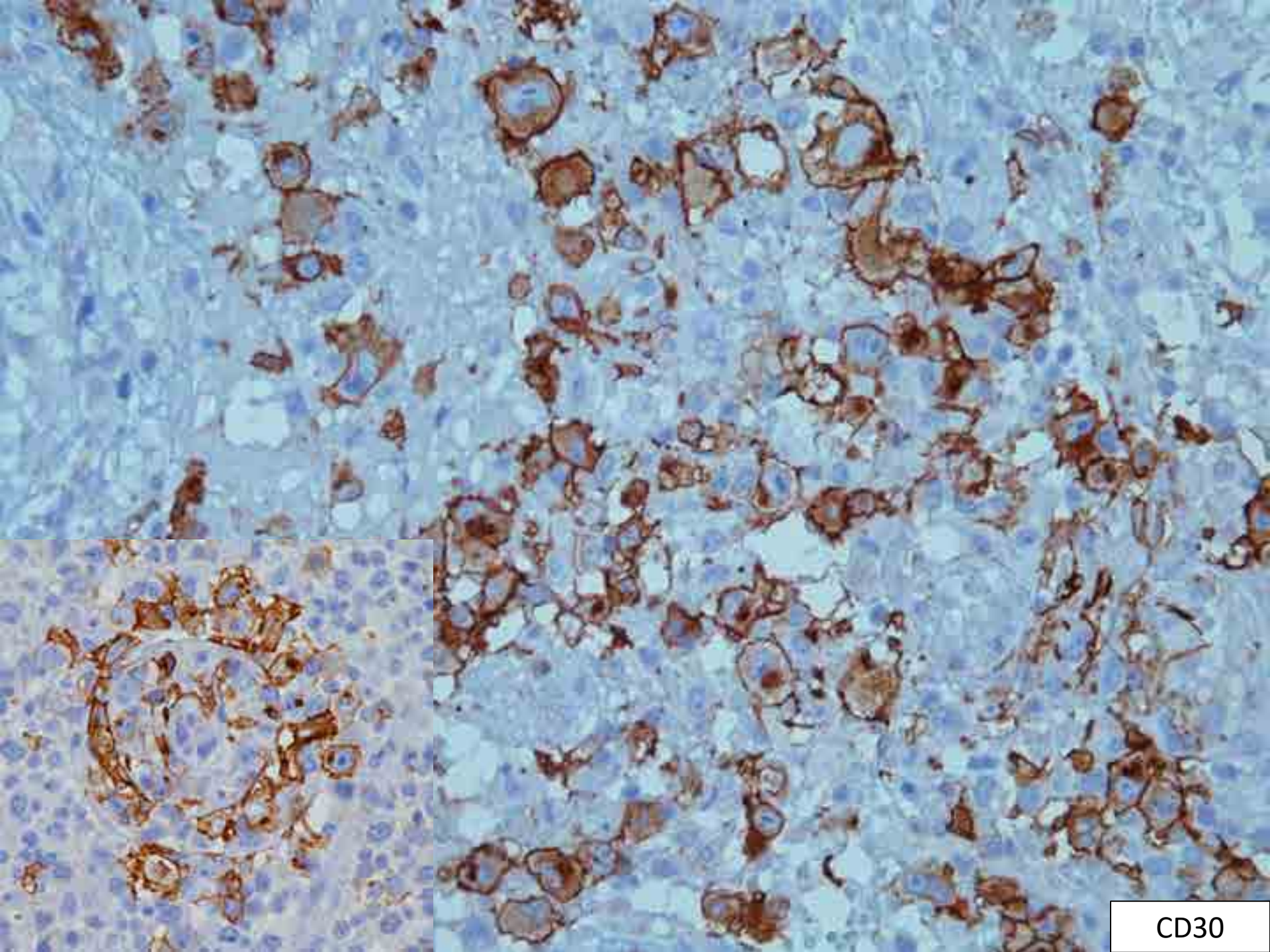
- Se realiza biopsia







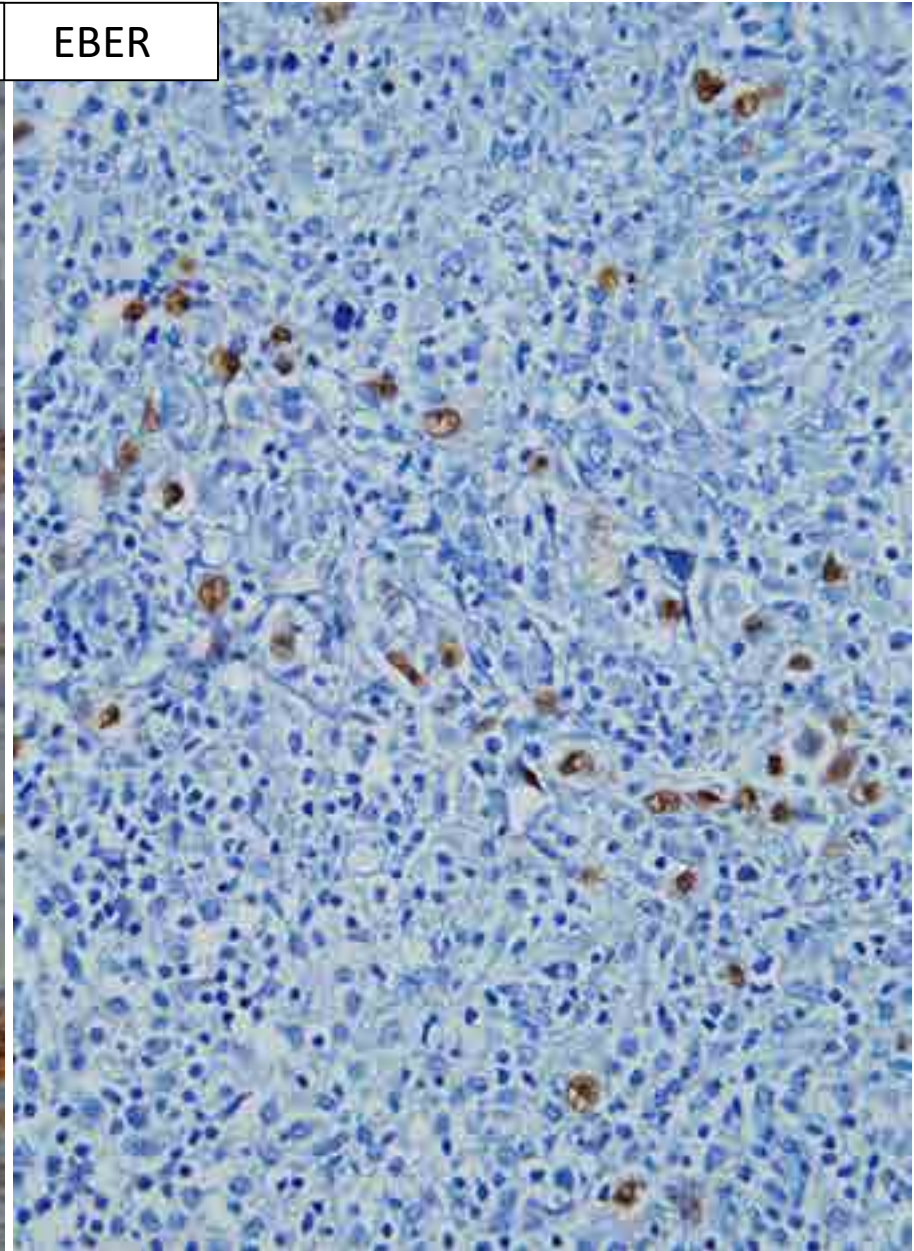
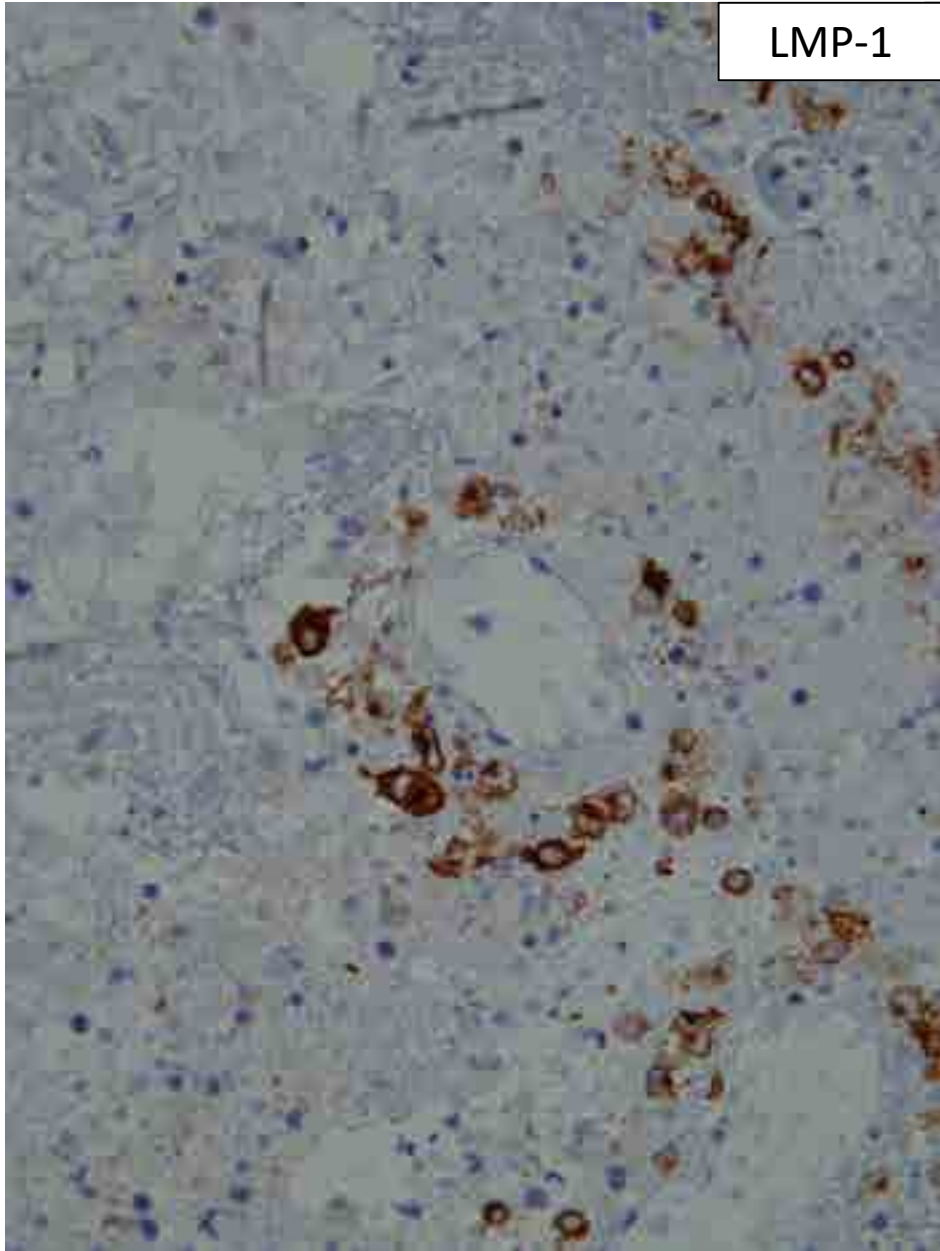


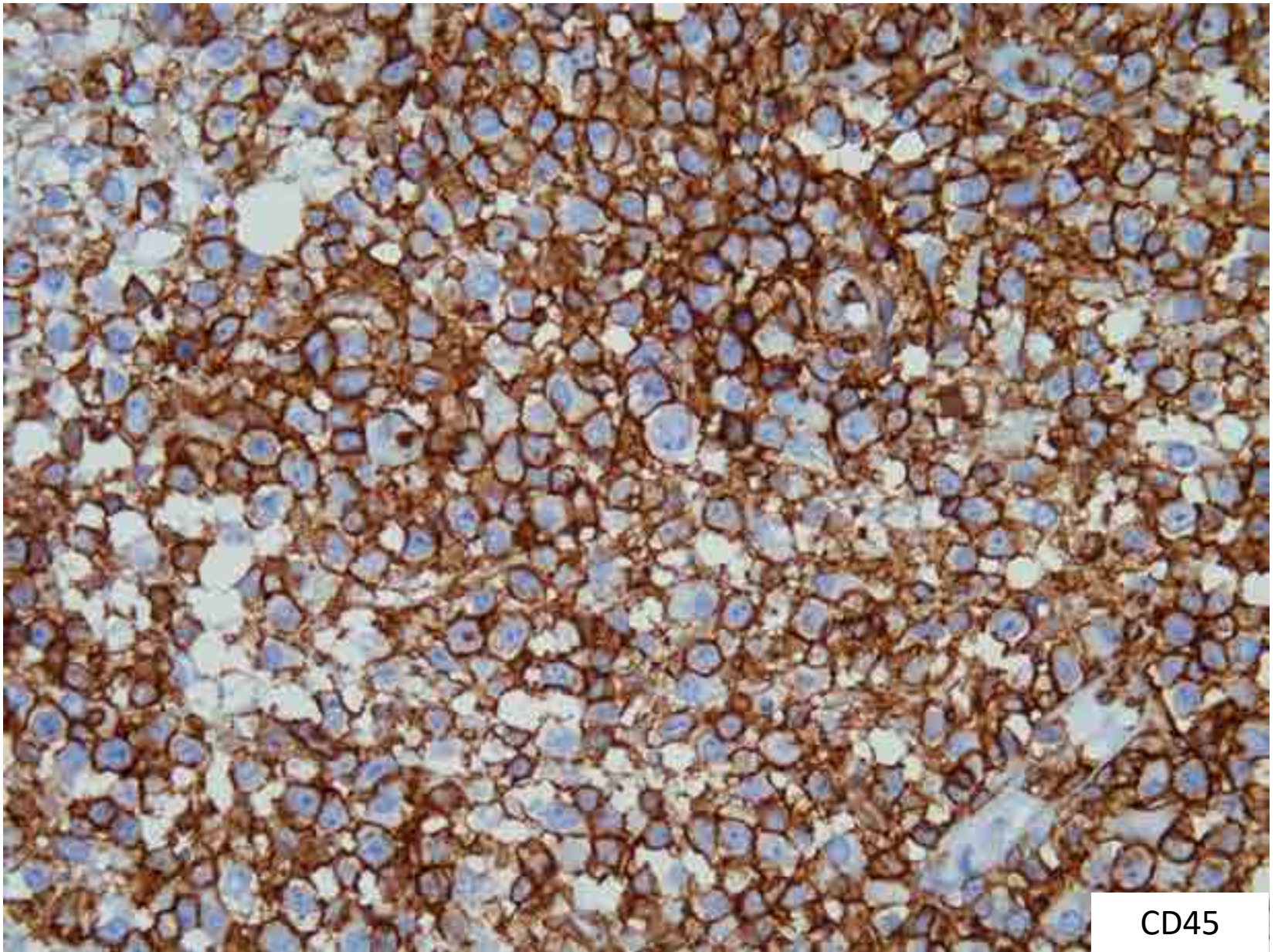


CD30

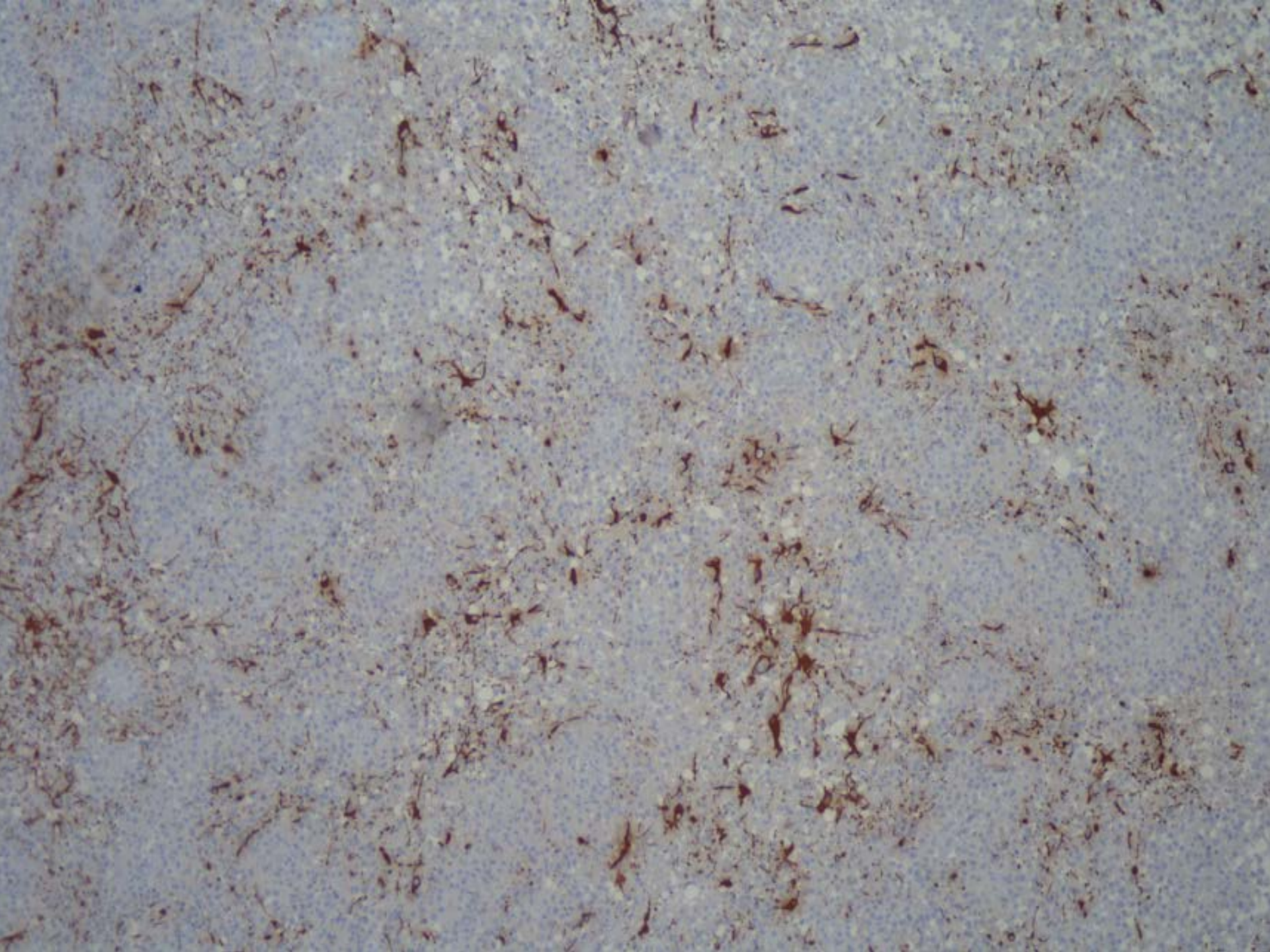
LMP-1

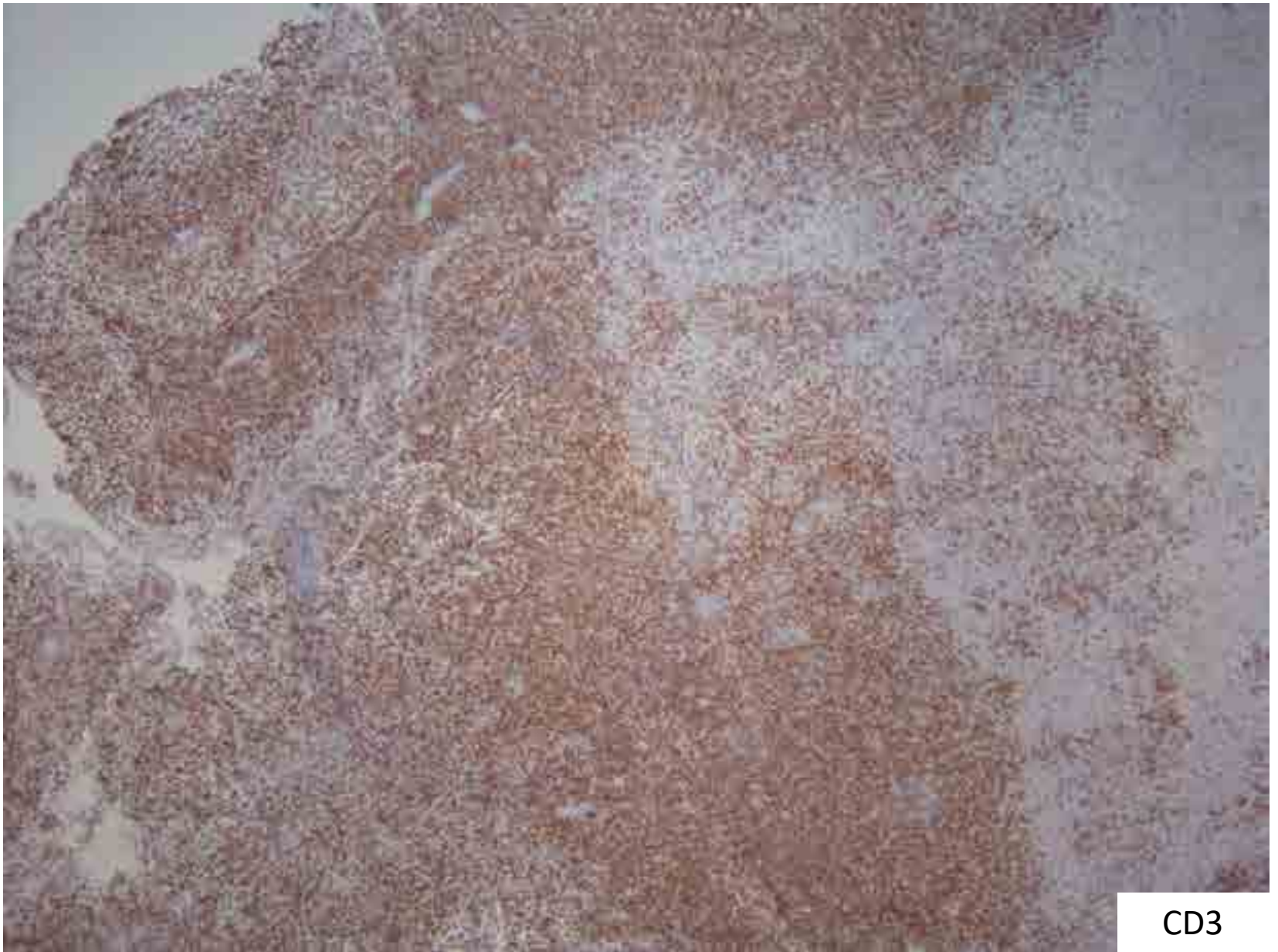
EBER





CD45





CD3

RESULTADOS DE INMUNOHISTOQUÍMICA

Anticuerpo	Resultado	Anticuerpo	Resultado
CD20 (pan-B)	Positivo, células grandes	CD68	Positivo, macrófagos en fondo
CD30	Positivo, células B grandes	CD163	Positivo, macrófagos en fondo
LMP-1	Positivo, células B grandes	CD15	Negativo
PAX-5	Positivo	CD3	Positivo, linfocitos en fondo
MUM-1	Positivo	PAFG	Negativo
EBER	Positivo	Ki67	Positivo, patrón reactivo
CD45	Positivo		

DIAGNÓSTICO

- BIOPSIA DE LESIÓN EN CEREBELO:
- GRANULOMATOSIS LINFOMATOIDE GRADO 2, CON EXPRESIÓN DE CD20 Y CD30, ASOCIADA AL VIRUS DE EPSTEIN-BARR.

GRANULOMATOSIS LINFOMATOIDE

- Desorden linfoproliferativo de células B, asociado a VEB, caracterizado por infiltrado linfoplasmácítico, difuso, angiocéntrico y angiodestructivo con presencia de células tipo Reed-Sternberg.

- Descrita en 1972 por Liebow.

Lymphomatoid Granulomatosis—A Single Institute Experience

Pathologic Findings and Clinical Correlations

Joo Y. Song, MD,† Stefania Pittaluga, MD, PhD,* Kieron Dunleavy, MD,‡ Nicole Grant, RN,‡
Therese White, RN,‡ Liuyan Jiang, MD,§ Theresa Davies-Hill,* Mark Raffeld, MD,*
Wyndham H. Wilson, MD, PhD,‡ and Elaine S. Jaffe, MD**

Abstract: Lymphomatoid granulomatosis (LYG) is a rare angiocentric and angiodestructive Epstein-Barr virus (EBV)-associated B-cell lymphoproliferative disorder. It is hypothesized that these patients have dysregulated immune surveillance of EBV. We reviewed the biopsies of 55 patients with LYG who were referred for a prospective trial at the National Cancer Institute (1995 to 2010) and evaluated the histologic, immunohistochemical, in situ hybridization, and molecular findings of these biopsies in conjunction with clinical information. Grading of the lesions was based on morphologic features and

from other EBV-associated B-cell lymphoproliferative disorders on the basis of the combination of clinical presentation, histology, and EBV studies. Grading of these lesions is important because it dictates the treatment choice.

Key Words: lymphomatoid granulomatosis, Epstein-Barr virus, immunodeficiency, immunosurveillance, lung, lymphoproliferative disorder

(Am J Surg Pathol 2015;39:141–156)

Epidemiología

- Hombres entre la 4-6 década de la vida
- Pacientes con algún grado de inmunocompromiso,
- Quimioterapia
- Radioterapia
- Sx de Wiskott-Aldrich
- VIH
- Distintos tipos de inmunodeficiencia humoral y celular ante el VEB

Datos clínicos

- Afeción Pulmonar (100%)
 - Lesiones bilaterales, lóbulos medios e inferiores.
- Sitios extrapulmonares
 - Cerebro (38%)
 - Hígado (19%)
 - Riñón (15%)
 - Piel (17%)
 - Lesiones maculopapulares, eritematosas, ulceradas.
- Cargas virales para VEB
 - Normales o ligeramente elevadas

Hallazgos histológicos

- Lesiones bien delimitadas
- Infiltrado difuso, angiocentrico, angiodestructivo
- Infiltrado polimorfo (linfocitos T, B, células plasmáticas)
- Necrosis (en todos los grados)
- Células B grandes con atipia variable
- Presencia de EBER en células grandes
- CD4>CD8

- Lymphomatoid Granulomatosis, A Single Institute Experience. Pathologic Findings and Clinical Correlations, Joo Y Song MD, Stefania Pittaluga, MD, 2015 American Journal Surgical Pathology, Vol 39 pg 141-145
- Hematopathology, Elaine S. Jaffe, Nancy Lee Harris, First Edition, 2011, Elsevier Saunders pg 382-391

Gradificación

	Necrosis	Atipia	Numero de células VEB+/hpf
Grado 1	Focal	Leve	<5
Grado 2	Moderada	Moderada	5-20
Grado 3	Extensa	Severa	>20

Las lesiones extrapulmonares tienden a mostrar mayor grado.

Diagnósticos Diferenciales

- Granulomatosis Linfomatoide
- Linfoma de Hodgkin
- LDCGB primario de cavidades
- Pseudotumor inflamatorio
- Granulomatosis de Wegener.

- Lymphomatoid Granulomatosis, A Single Institute Experience. Pathologic Findings and Clinical Correlations, Joo Y Song MD, Stefania Pittaluga, MD, 2015 American Journal Surgical Pathology, Vol 39 pg 141-145
- Hematopathology, Elaine S. Jaffe, Nancy Lee Harris, First Edition, 2011, Elsevier Saunders pg 382-391